



The Right Connection®

TTMA Flange Extensions

Color-Coded

Application

- Used to connect an API coupler to a loading arm

Size

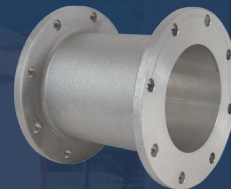
- 4"

Features

- Adds a 6" space to allow for clearance between the loading arm and the tank truck
- Color coded for product identification
- Other colors available upon request. Consult Dixon® for more details

Material

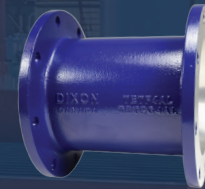
- Aluminum, powder coated aluminum



TETF4AL



TETF4AL-W



TETF4AL-B



TETF4AL-G



TETF4AL-R



TETF4AL-Y



TETF4AL-G/Y



TETF4AL-R/W/B

| Description | Part # |
|---|---------------|
| TTMA flange extension | TETF4AL |
| TTMA flange extension; color-coded white | TETF4AL-W |
| TTMA flange extension; color-coded blue | TETF4AL-B |
| TTMA flange extension; color-coded green | TETF4AL-G |
| TTMA flange extension; color-coded red | TETF4AL-R |
| TTMA flange extension; color-coded yellow | TETF4AL-Y |
| TTMA flange extension; color-coded orange | TETF4AL-O |
| TTMA flange extension; color-coded black | TETF4AL-BLK |
| TTMA flange extension; color-coded combination green and yellow | TETF4AL-G/Y |
| TTMA flange extension; color-coded combination blue and white | TETF4AL-B/W |
| TTMA flange extension; color-coded combination blue and red | TETF4AL-B/R |
| TTMA flange extension; color-coded combination white and red | TETF4AL-W/R |
| TTMA flange extension; color-coded combination red, white, and blue | TETF4AL-R/W/B |

Dixon Specialty Products

225 Talbot Blvd.
 Chestertown, MD 21620
 ph: 888.226.4673
 fx: 410.778.1958
 dixonvalve.com

