

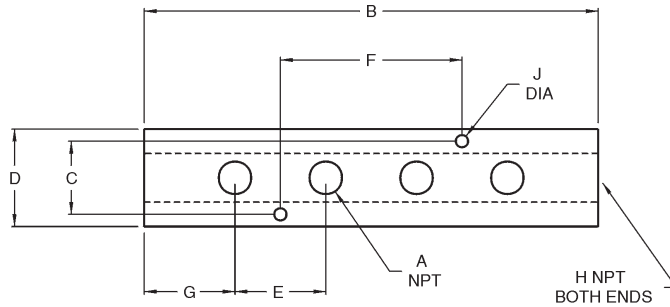
## Bar Manifolds

### Features

- Can be mounted on a wall or work bench, safely distributing four hose lines to a work area
- Brass hex head plugs sold on page 469

### Specification

- Maximum operating pressure: **300 PSI** at ambient temperature **70°F (21°C)**



Aluminum Part #	A	B	C	D	E	F	G	H	J
AMF32	1/4"	7-5/8"	7/8"	1-1/4"	1-7/8"	3-3/4"	1"	3/8"	.20"
AMF42	1/4"	7-5/8"	1-1/8"	1-1/2"	1-7/8"	3-3/4"	1"	1/2"	.20"
AMF43	3/8"	8"	1-1/8"	1-1/2"	2"	4"	1"	1/2"	.20"

## 3 in 1 Manifolds

### Features

- Supplies three air operated tools from a single hose, permitting use of air by more than one mechanic
- Can be mounted to a pipe at workbench or overhead
- Different tools in the shop use different styles of couplers; mount three different style couplers on one manifold



NPT Inlet (1)	NPT Outlets (3)	Aluminum Part #
1/4"	1/4"	D3404
3/8"	1/4"	D3406
1/2"	1/4"	D3408