

**Pipe Fittings**  
**Street Tees**

**Feature**

- Ref SAE 130424



Female NPTF	Male NPTF	Extruded Brass		Optional Qty	Lead-Free Brass <sup>1, 2, 3</sup> Part #
		Previous Part #	Part #		
1/8"	1/8"	326-0202	3260202C	25	---
1/4"	1/4"	326-0404	3260404C <sup>4</sup>	25	3260404CLF
3/8"	3/8"	326-0606	3260606C	25	---
1/2"	1/2"	326-0808	3260808C	25	---
3/4"	3/4"	326-1212	3261212C	10	---

<sup>1</sup> Lead-free brass <=0.25% lead; Alloy CA2745; Alloy C46400

<sup>2</sup> Conforms To: Safe Water Drinking Act (SWDA) of Jan. 4, 2014; California AB1953; RoHS Compliant

<sup>3</sup> NPT thread

<sup>4</sup> Product shape may vary

**Male Branch Tees**

**Feature**

- Ref SAE 130425



NPTF	Extruded Brass		Optional Qty
	Previous Part #	Part #	
1/8"	324-0202	3240202C	25
1/4"	324-0404	3240404C <sup>1</sup>	25
3/8"	324-0606	3240606C	25
1/2"	324-0808	3240808C	25
3/4"	324-1212	3241212C	10

<sup>1</sup> Product shape may vary

**Pipe Crosses**



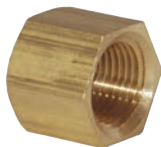
Female NPTF	Extruded Brass		Optional Qty
	Previous Part #	Part #	
1/8"	228-0202	2280202C	25
1/4"	228-0404	2280404C	25
3/8"	228-0606	2280606C	25
1/2"	228-0808	2280808C	10
3/4"	228-1212	2281212C	10

NOTE: For additional information on pipe dimensions please reference [dixonvalve.com](http://dixonvalve.com).

**NPTF Pipe Caps**

**Feature**

- Lead-free per NSF/ANSI 372



Female NPTF	Optional Qty	Lead-Free Brass <sup>1, 2</sup> Part #
1/8"	50	2130200CLF
1/4"	100	2130400CLF
3/8"	25	2130600CLF
1/2"	25	2130800CLF
3/4"	25	2131200CLF

<sup>1</sup> Lead-free Brass <= .25% lead, Alloy C2745

<sup>2</sup> Conforms To: Safe Water Drinking Act (SWDA) of Jan. 4, 2014; California AB1953; RoHS Compliant