

Single Male Outlet with Hex (open snoot)

Application

- Used to connect fire hose to a standpipe or sprinkler system

Features

- Other sizes, threads, and configurations are available, consult Dixon® for information
- Finishes: -P polished, -C polished chrome plated



polished



polished chrome plated

| Female NPT Thread | Male Thread | Cast Brass Part # |
|-------------------|-----------------|-------------------|
| 2-1/2" | 2-1/2" NST (NH) | MOC250F-P |
| | | MOC250F-C |
| 3" | 2-1/2" NST (NH) | MOC3025F-P |
| | 3" NST (NH) | MOC3025F-C |
| | | MOC300F-P |

| Female NPT Thread | Male Thread | Cast Brass Part # |
|-------------------|-------------|-------------------|
| 2-1/2" | 2-1/2" NYC | MOC250NYC-P |
| | 2-1/2" NYFD | MOC250NYFD-P |

Female to Male Hex Nipples

Feature

- Other configurations are also available, consult Dixon for information

| Female Thread | Male Thread | Cast Brass Part # |
|-----------------|-----------------|-------------------|
| 3/4 GHT | 1" NPT | FM7610T |
| 1" NPSH | 3/4" GHT | FM10S76 |
| 1" NPT | 3/4" GHT | FM1076 |
| | 1" NPSH | FM1010 |
| | 1" NST (NH) | FM1010F |
| | 1-1/2" NPSH | FM1015 |
| 1" NST (NH) | 1-1/2" NST (NH) | FM1015F |
| | 1" NPT | FM10F10T |
| 1-1/2" NPT | 1-1/2" NPSH | FM1515 |
| | 1-1/2" NST (NH) | FM1515F |
| | 2-1/2" NST (NH) | FM1525F |
| 1-1/2" NST (NH) | 1-1/2" NPSH | FM15F15S |
| | 1-1/2" NPT | FM15F15T |
| | 2" NPT | FM15F20T |
| | 2-1/2" NPT | FM15F25T |
| | 2-1/2" NST (NH) | FM15F25F |
| | 1-1/2" NST (NH) | FM15F15F |
| 1-1/2" NPSH | 1-1/2" NST (NH) | FM15S15F |
| | 1-1/2" NPT | FM15S15T |
| | 2" NPT | FM15S20T |
| 2" NPSH | 1-1/2" NPSH | FM20S15 |
| | 1-1/2" NST (NH) | FM20S15F |
| | 1-1/2" NPT | FM20S15T |
| | 2" NPT | FM20S20T |
| 2" NPT | 2-1/2" NST (NH) | FM20S25F |
| | 1-1/2" NPSH | FM2015 |
| | 1-1/2" NST (NH) | FM2015F |
| | 2" NPSH | FM2020 |
| | 2-1/2" NST (NH) | FM2025F |
| 2-1/2" NST (NH) | 3/4" NPT | FM25F75T |
| | 1" NPT | FM25F10T |
| | 1-1/2" NST (NH) | FM25F15F |
| | 1-1/2" NPT | FM25F15T |
| | 2" NPT | FM25F20T |
| 2-1/2" NPT | 1-1/2" NST (NH) | FM2515F |
| | 2-1/2" NPSH | FM2525 |
| | 2-1/2" NST (NH) | FM2525F |

Table continued on next page

NOTE: All adapters are made to approved Dixon specifications.

NOTE: Replacement washers can be found on page 814

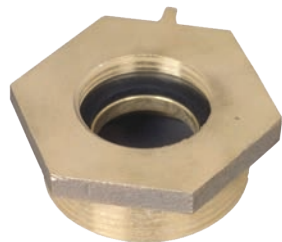
N



reducer



same size



increaser