

### Dual Y Valves

**Application**

- Ideal for compressor applications

**Feature**

- Dual action valve

**Specifications**

- Non-vented pressure rating: **600 PSI CWP**
- Vented pressure rating: **125 PSI CWP**



**Vented**

Female NPT Inlet (1)	Female NPT Outlets (2)	Bronze Part #
1"	3/4"	BBV100DWV
1-1/4"		BBV125DWV

**Non-Vented**

Female NPT Inlet (1)	Female NPT Outlets (2)	Bronze Part #
1"	3/4"	BBV100DW
1-1/4"		BBV125DW



### Mini Ball Valves

**Feature**

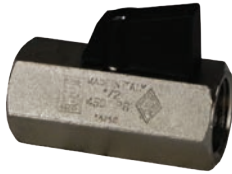
- Blow-out proof stem

**Material**

- PTFE seats and FKM stem seal

**Specifications**

- Maximum temperature **330°F (166°C)**
- Pressure rating: **450 PSI**



**Approval**

- Canadian Standard Association approved

Female NPT	Port	Nickel Plated Brass Part #
1/8"	standard	MBV12
1/4"		MBV25
3/8"		MBV38
1/2"		MBV50